





## SPECIFICATIONS

Camera	
Image Sensor	1/2.8" CMOS
Signal System	PAL/NTSC
Min. Illumination	Color: 0.02Lux@ (F1.6, AGC ON), B/W: 0Lux with IR
Shutter Time	1s to 1/100,000s
Day & Night	Dual IR Cut Filter with Auto Switch
Wide Dynamic Range	Digital WDR

Lens	
Lens Type	Fixed
Focus	4mm
Lens Mount	M12
Aperture	F1.6, Fixed
FOV	Horizontal field of view: 90.4° Vertical field of view: 46.8°

Illuminator	
IR LEDs	2
IR Range	Up to 50m
Wavelength	850nm
White LEDs	2

Compression Standard	
Video Compression	S+265/H.265/H.264
Video Bit Rate	32Kbps~6Mbps
Audio Compression	G.711/G.711U
Audio Bit Rate	8K/16K

Image	
Max. Resolution	1920x1080
Main Stream	PAL: 25fps (2304×1906, 1920×1080, 1280×720, 704×576, 640×480) NTSC: 24fps (2304×1906),30fps (1920×1080, 1280×720, 704×480, 640×480)
Sub Stream	PAL: 25fps (704×576, 704×288, 640×360, 352×288) NTSC: 30fps (704×480, 704×240, 640×360, 352×240)
Third Stream	N/A
Image Setting	Saturation, brightness, contrast, sharpness, adjustable by client software or web browser
Image Enhancement	3D DNR/HLC
ROI	N/A
OSD	16×16, 32×32, adaptable size, Letters Such as Week, Date, Time, Total 3 Regions
Picture Overlay	N/A
Privacy Mask	Yes, 4 regions
Smart Defog	Yes

Feature	
Alarm Trigger	IP Address Conflict
Video Analytics	N/A
Early Warning(EW)	N/A

# Tiandy

Network	
Network Storage	N/A
Protocols	HTTP,TCP/IP,UDP,ICMP,DHCP,DNS,NTP,Telnet,RTSP,CGI
System Compatibility	ONVIF (PROFILE S/T), SDK, P2P(Mutually exclusive with Profile G)
Remote Connection	≤2
Client	Easy7, EasyLive Plus
Web Version	Web6

Wi-Fi	
Wireless Standards	IEEE802.11b/g/n
Frequency Range	2.4GHz ~ 2.4835 GHz
Channel Bandwidth	20/40MHz
Protocols	802.11b: CCK, QPSK, BPSK 802.11g/n: OFDM/HT
Security	64/128-bit WEP, WPA/WPA2, WPA-PSK/WPA2-PSK, WPS
Transfer Rates	802.11b: 11Mbps 802.11g: 54Mbps 802.11n: up to 150Mbps
Wireless Range	Up to 30m (The performance varies based on actual environment)
Power Consumption	802.11b: 17±1.5dBm@11Mbps 802.11g: 14±1.5dBm@54Mbps 802.11n: 12.5±1.5dBm@150Mbps

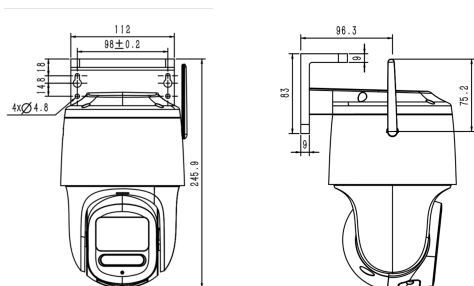
Interface	
Communication Interface	1 RJ45 10M/ 100M self adaptive Ethernet port
Audio I/O	Mic in
Alarm I/O	N/A
Reset Button	Yes
On-board storage	Built-in MicroSD card slot, up to 512 GB

General	
Web Client Language	2 languages English, Turkish
Operating Conditions	-30°C ~ 60°C, 0 ~ 95% RH
Power Supply	DC 12V±25%
Power Consumption	MAX: 12W(12V)
Protection	IP67, Lightning protection, surge protection and voltage transient protection meets EN 55035:2017
Heater	N/A
Dimensions	139mm(D)x246mm(H)
Weight	1Kg

\* Listed resolutions are only selectable options. It does not mean that all streams can work at their maximum resolution at the same time.

**TC-H334S Spec: I5W/C/WIFI/4mm/V4.1**

## DIMENSIONS



## ACCESSORIES



A35  
CORNER MOUNT



TC-P54BM SPEC: V5  
JUNCTION BOX



A36  
POLE MOUNT

DISTRIBUTED BY



Tiandy Technologies Co.,Ltd.

Email: sales@tiandy.com  
Website: en.tiandy.com

Tel: +86-22-58596178  
Fax: +86-22-58596048